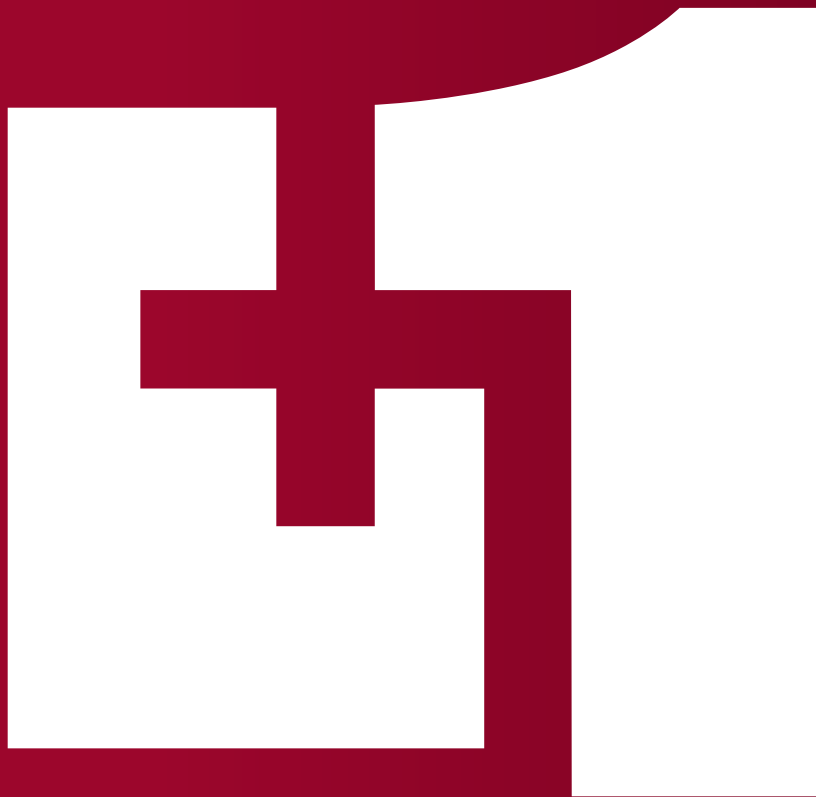


Fundamentals of **PLUS+1™ GUIDE**
- Programming

Graphical **U**ser **I**ntegrated **D**evelopment **E**nvironment



PLUS e1™
by SAUER-DANFOSS


What really matters is inside®

Fundamentals of **PLUS+1™** GUIDE

- Programming

OUR PLUS+1 GUIDE SEMINAR IS DESIGNED TO GIVE EXPERIENCED GUIDE PROGRAMMERS THE TOOLS TO USE THE ADVANCED FEATURES OF THE TOOLSET.

ATTEND THIS THREE DAY SEMINAR AND QUICKLY LEARN HOW TO BUILD CUSTOMIZED APPLICATIONS FROM SAUER-DANFOSS LIBRARY OF SOFTWARE CONTROL OBJECTS.

It is no secret that the OEM design environment continues to become more challenging every day, every year. As design engineers face increasing demands from tighter emission controls to enhanced operating efficiencies, the mobile machinery market has also become intensely competitive.

Engineers are expected to accomplish more in less time and with fewer internal resources. As expectations rise and the demands increase, Sauer-Danfoss has been relentlessly pursuing innovative solutions in mobile hydraulics and control systems.



Fundamentals of PLUS+1™ GUIDE

- Programming

GUIDE TRAINING SEMINAR

This training session will focus on providing the skills to use PLUS+1 GUIDE graphical development environment.

This is a hands on learning experience.

Participants will be able to write, compile and run a simple application before the end of the first day.

The first two days will concentrate on the basic use of the programming environment.

The last days will focus on more complex applications development using top down programming methods and PLUS+1 GUIDE components. Participants will have an opportunity to discuss their application requirements with instructors.

A self-paced tutorial will be provided to help students review their skills during the training and refresh their memory after the course is completed. A basic skill test will be given on the last day.

Qualified participants will be awarded a PLUS+1 Certified Programmers Certificate.

INTENDED AUDIENCE

This is a hands on training session intended for engineers and product managers who need to understand, evaluate or use PLUS+1 GUIDE technology.

This technical training offers first hand information about PLUS+1 GUIDE for use in control applications for off-road machinery.



Fundamentals of **PLUS+1™ GUIDE**

- Programming

QUALIFIED TRAINERS

High skilled trainers with several years of professional experience designing and implementing control applications will conduct this seminar.

Participants will have an opportunity to ask questions regarding their own application requirements and learn how PLUS+1 can be used to address those needs.

IN-HOUSE TRAINING

In-house training is offered for those companies having dedicated training requirements. PLUS+1 GUIDE trainers have a long experience in teaching PLUS+1 technology. The agenda of an in-house training will be tailored to the customer needs.

Please contact your local sales office for training in your local language.



YOUR BENEFITS AT A GLANCE

- Lower training cost per employee.
- Training courses to meet your specific requirements at your facility.
- Create customized courses by combining topics from multiple courses.
- Hassle-free experience for participants and no travel expenses.
- Instructors are Sauer-Danfoss engineers or certified instructors.

WORKSHOP FORMAT

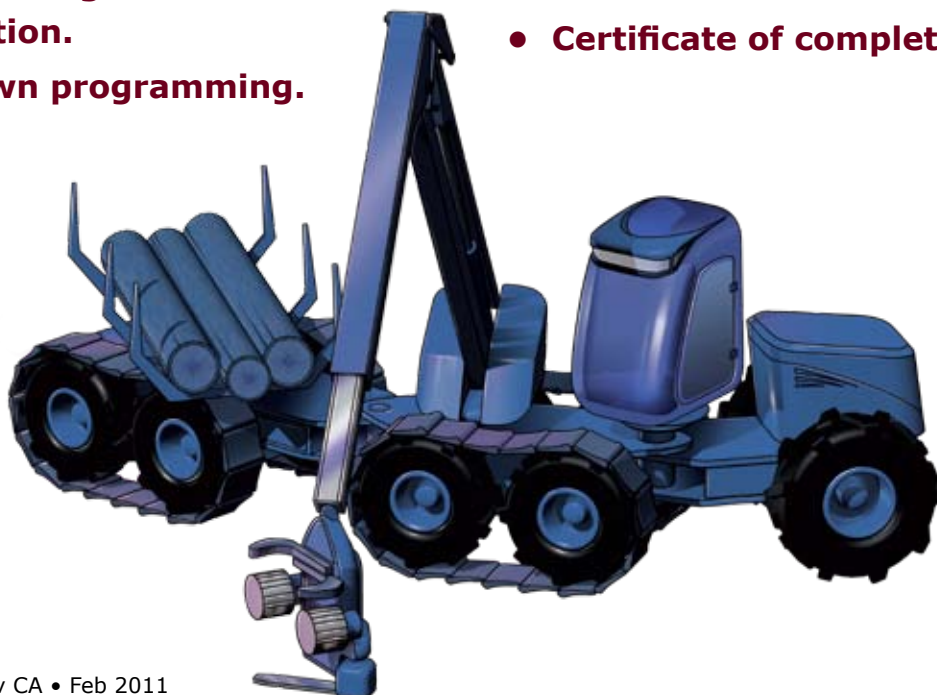
The GUIDE training session will be conducted in a hands-on classroom environment.

Participants are responsible for providing their own PC with PLUS+1 GUIDE installed with full license. A 5-day student license will be provided, if needed.



TRAINING OBJECTIVES

- **Set-up PLUS+1 Hardware.**
- **Open a new project and add a template.**
- **Learn the flow of data from input to output.**
- **Learn basic screen navigation.**
- **Introduction to drawing tools.**
- **Introduction to components and functions.**
- **Introduction to analog, digital and frequency inputs, digital and PWM outputs.**
- **Program small applications.**
- **Create a diagnostic tool application.**
- **Top down programming.**
- **Set up Pot 2 and Pot 3 functions, auto cal and user cal.**
- **Design a dual path propel/steer system.**
- **Finding wiring errors with "View Logical Net."**
- **Learn to create pages and nested pages.**
- **Implement a sub bus.**
- **CAN and arrays.**
- **Add CAN communications to Dual Path system.**
- **Display Programming.**
- **Final Exam.**
- **Certificate of completion.**



Fundamentals of **PLUS+1™ GUIDE**

- Programming

PARTICIPANTS WILL PROVIDE:

A laptop computer with the following recommended system requirements:

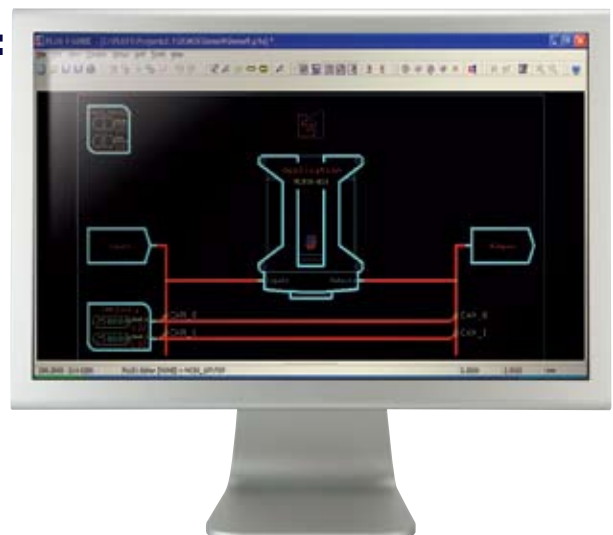
- Windows® XP (32-bit) or Windows 7 (32/64-bit).
- 3.2 GHz processor or better.
- 1.5 GB of RAM.
- 1024x768 or higher resolutions graphics card/monitor with 32 bit color.
- CD-ROM drive.
- USB 2.0 for communication.
- Local administrator rights on used PC.
- 400 MB of available hard disk space.

EVERY PARTICIPANT IS REGISTERED AND PLUS+1 GUIDE LICENSE IS VALID AND ALREADY INSTALLED SUCCESSFULLY. (THE TRIAL VERSION CAN BE DOWNLOADED VIA INTERNET)

www.sauer-danfoss.com

SAUER-DANFOSS WILL PROVIDE:

- Comprehensive User Guide with Getting Started tutorials.
- PLUS+1™ hardware data sheets.
- Classroom material
- Lunch and classroom beverage
- All required hardware, controllers, communication devices etc.



Training Registration Form

Location	North America: Sauer-Danfoss Company 3500 Annapolis Lane North Plymouth, MN 55447 U.S.A	Europe: Sauer-Danfoss AB Teknikgatan 1 343 34 Älmhult Sweden
E-mail or fax this form to:	rreynolds@sauer-danfoss.com , +1 763-559-4126	tpalmgren@sauer-danfoss.com , +46-476 569 44
Class date:		
Name:		
Address:		
ZIP, City:		
Country:		
Company:		
Phone:		
E-mail:		

TO ENROLL IN PLUS+1 GUIDE TRAINING

- Place an order for Part Number 11076423 through your local authorized Sauer-Danfoss distributor or call our Customer Service department at: EU: +46-476 569 00 / NA: +1-763-509-2001.
The course fee includes training material, lunches and refreshments.
- After receiving your registration Sauer-Danfoss will e-mail confirmation and course details.
- Hotel accommodation and transportation will be the responsibility of the student.

CANCELLATION POLICY

Due to limited enrolment, cancellations less than 10 working days prior to the training date will not be refunded. A substitute participant is always welcome at no additional charge.