

DESCRIPTION

The Sauer-Danfoss MCE121A Load Controller is used in applications requiring constant engine RPM under dynamic load conditions. Shedding load upon encountering obstacles avoids engine stall, prolongs engine life and maximizes fuel efficiency.

FEATURES

- Adjustable output current.
- Antistall function.
- Nearly constant PTO speed.
- 12V_{DC} or 24V_{DC} supply voltage.
- Reverse polarity and short circuit protected.
- Moisture and corrosion resistant.
- Withstands vibration and shock.

ORDERING INFORMATION

Controller	Supply voltage [V _{DC}]	Frequency range [Hz]	Id. No.
MCE121A1001	12 or 24	500 - 2000	791566
MCE121A1002	12 or 24	1500 - 6000	791574

TECHNICAL DATA

Supply voltage: 12V_{DC} or 24V_{DC}

Ripple: ≤ 10 %

Max. output voltage: 6V_{DC}

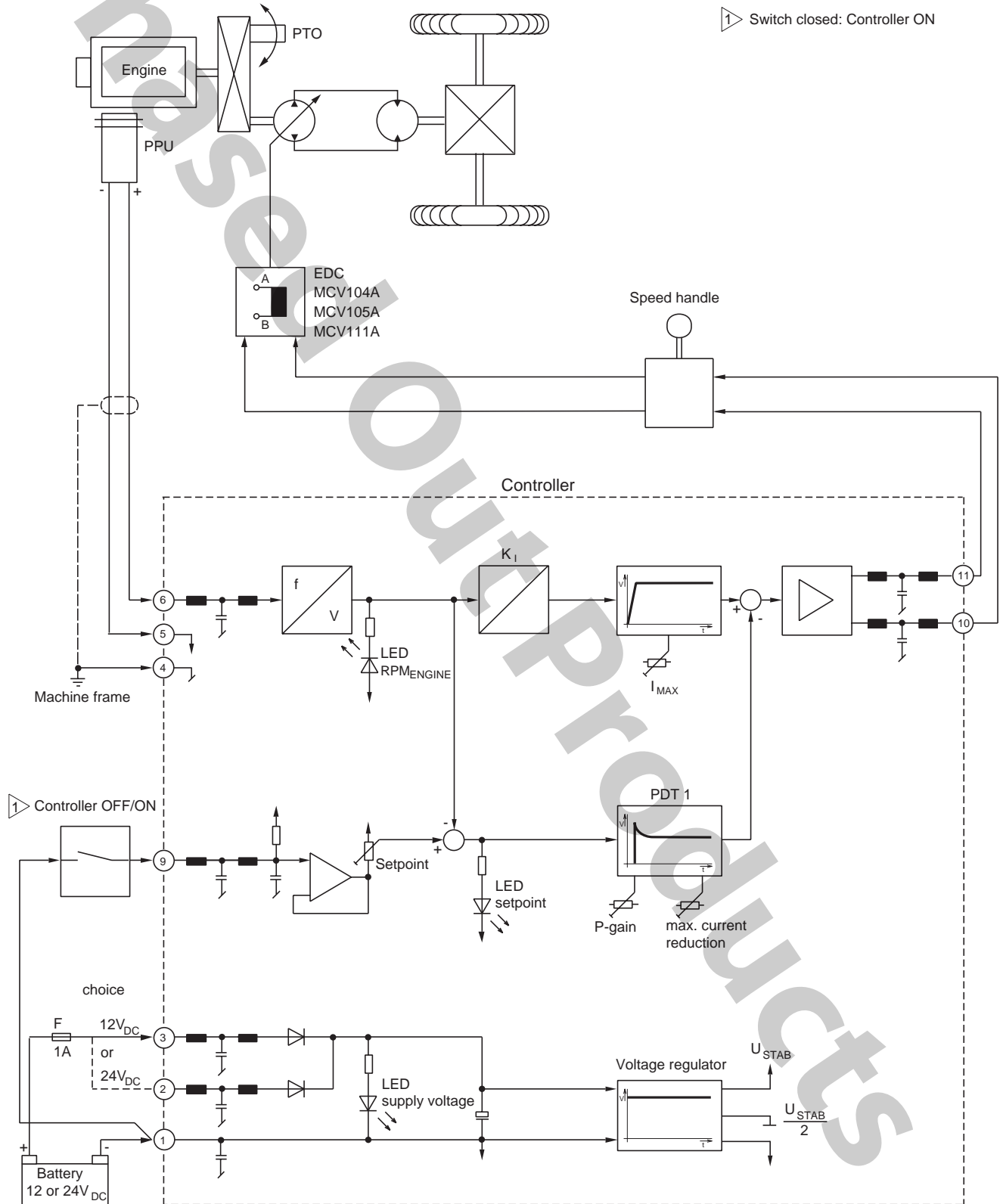
Power load: 4,2W or 8,4W

Frequency range: see ordering information

© 2001, Sauer-Danfoss

Sauer-Danfoss can accept no responsibility for possible errors in catalogues, brochures and other printed material. Sauer -Danfoss reserves the right to alter its products without prior notice. This also applies to products already ordered provided that such alterations can be made without subsequent changes being necessary in specifications already agreed. All trademarks in this material are properties of the respective companies. Sauer-Danfoss and the Sauer-Danfoss logotype are trademarks of the Sauer-Danfoss Group. All rights reserved.

BLOCK DIAGRAM



THEORY OF OPERATION

The Load Controller MCE121A is used to reduce the power requested from the propel transmission under conditions which would otherwise overload the engine.

If the engine speed droops due to heavy loading, the resulting measured speed is compared to a desired engine speed setpoint. If this setpoint is exceeded, the Controller reduces the output current.

The adjustable control parameters are shown in figure 1.

The reduction of the output current (see figure 2) to the EDC, causes a reduced power request from the propel transmission. That means the engine speed for the PTO is nearly constant.

The step response of the Load Controller after a load jump is shown in figure 3.

Generally the propel speed is set with a control handle in series to the Controller output (see block diagram).

OPERATION DIAGRAMS

Figure 1: Adjustable control parameters

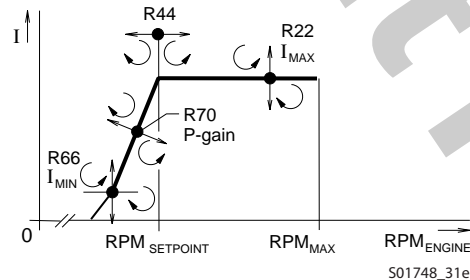


Figure 3: Step response of the Load Controller

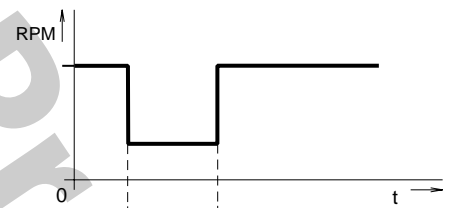
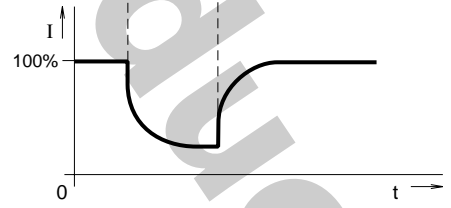
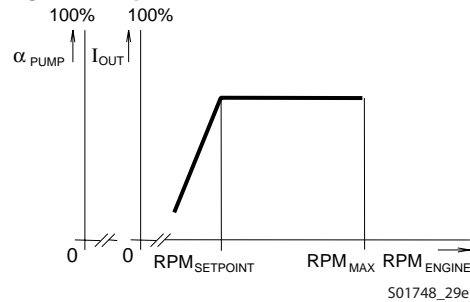


Figure 2: output current reduction



OUR PRODUCTS

Hydrostatic transmissions
Hydraulic power steering
Electric power steering
Closed and open circuit axial piston pumps and motors
Gear pumps and motors
Bent axis motors
Radial piston motors
Orbital motors
Transit mixer drives
Planetary compact gears
Proportional valves
Directional spool valves
Cartridge valves
Hydraulic integrated circuits
Hydrostatic transaxles
Integrated systems
Fan drive systems
Electrohydraulic controls
Digital electronics and software
Battery powered inverter
Sensors

Sauer-Danfoss Hydraulic Power Systems – Market Leaders Worldwide

Sauer-Danfoss is a comprehensive supplier providing complete systems to the global mobile market.

Sauer-Danfoss serves markets such as agriculture, construction, road building, material handling, municipal, forestry, turf care, and many others.

We offer our customers optimum solutions for their needs and develop new products and systems in close cooperation and partnership with them.

Sauer-Danfoss specializes in integrating a full range of system components to provide vehicle designers with the most advanced total system design.

Sauer-Danfoss provides comprehensive worldwide service for its products through an extensive network of Authorized Service Centers strategically located in all parts of the world.

Sauer-Danfoss (US) Company
2800 East 13th Street
Ames, IA 50010, USA
Phone: +1 515 239-6000, Fax: +1 515 239-6618

Sauer-Danfoss (Neumünster) GmbH & Co. OHG
Postfach 2460, D-24531 Neumünster
Krokamp 35, D-24539 Neumünster, Germany
Phone: +49 4321 871-0, Fax: +49 4321 871-284

Sauer-Danfoss (Nordborg) A/S
DK-6430 Nordborg, Denmark
Phone: +45 7488-4444, Fax: +45 7488-4400

Sauer-Danfoss (US) Company
3500 Annapolis Lane North
Minneapolis, MN 55447, USA
Phone: +1 763 509-2084, Fax: +1 763 559-0108