

Unit Specification

KE07205

Ramped Valve Driver

3500 Annapolis Lane North, Minneapolis, MN 55447
Telephone: (763) 509-2084 Telefax: (763) 559-0108

ISSUE: 1

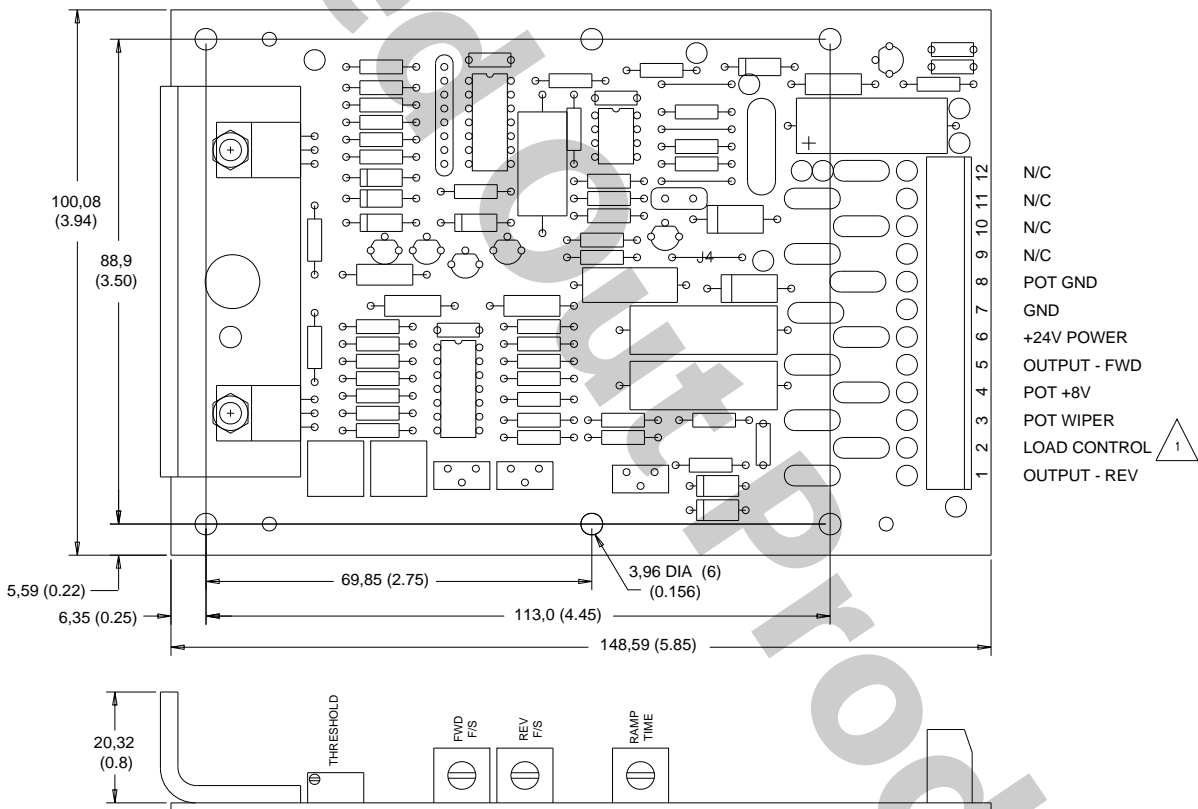
DATE: May 1993

GENERAL DESCRIPTION

This device is a ramped valve driver which accepts a setpoint potentiometer input from a control handle and drives a dual coil proportional valve. It is pulse-width modulated and has adjustable acceleration/deceleration ramping. The threshold, full stroke forward and full stroke reverse outputs are adjustable.

The KE07205 is a direct replacement for the MXX458 or the MXX1139. It is the same as the KE07203 except it has a 3.4 volt reference for null.

DIMENSION AND CONNECTION DIAGRAM



⚠ WHEN USED WITH LOAD CONTROL, CONNECT LOAD CONTROL OUTPUT TO TERMINAL 2 AND REMOVE JUMPER J4

1686

Dimensions in millimeters (inches).

OUTPUT CHARACTERISTICS

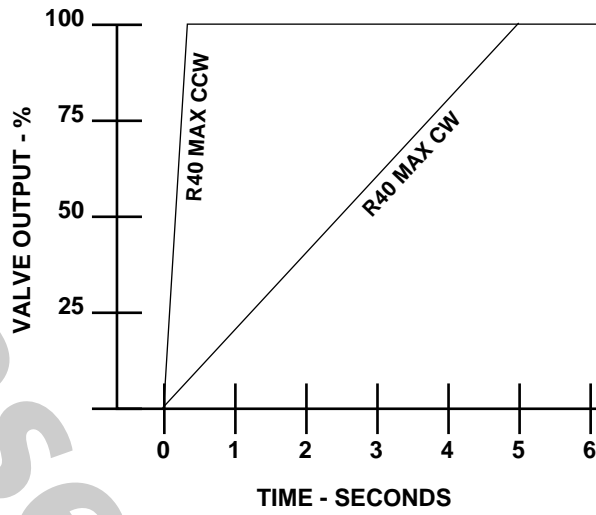
SUPPLY VOLTAGE
24 Vdc

OUTPUT CURRENT
0.7 A

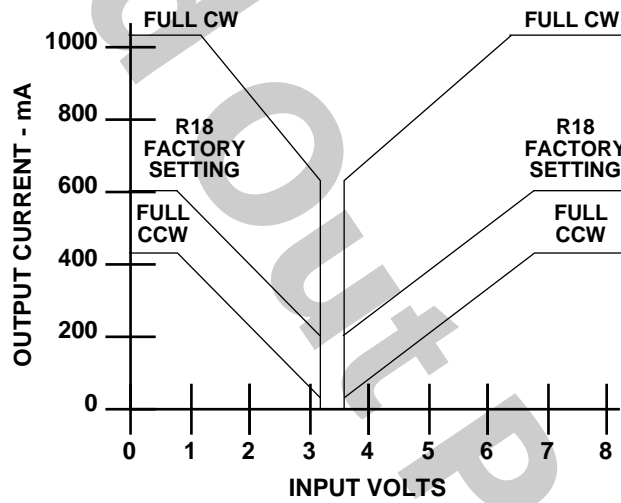
PWM FREQUENCY
100 Hz

FACTORY SETTINGS WITH 26 OHM LOAD
Threshold: 200 mA
Full Stroke 600 mA

ADJUSTMENTS

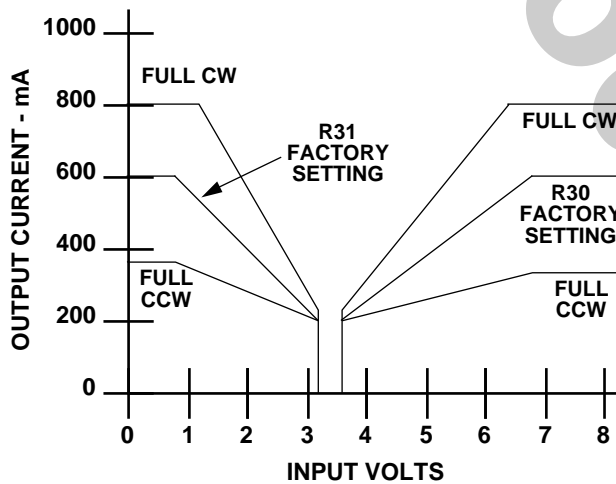


1679



1696

Threshold adjustment.



1697

Full stroke adjustment.