

Unit Specification

KE04101

Valve Drive Amplifier

3500 Annapolis Lane North, Minneapolis, MN 55447
 Telephone: (763) 509-2084 Telefax: (763) 559-0108

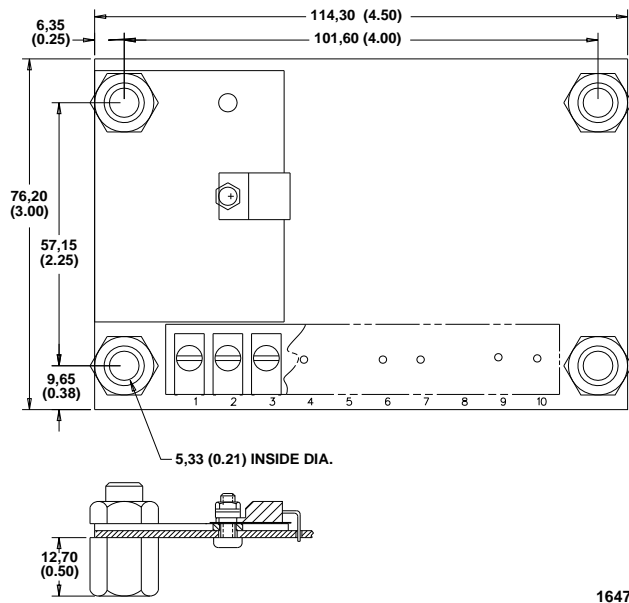
ISSUE: 2

DATE: September 1996

GENERAL DESCRIPTION

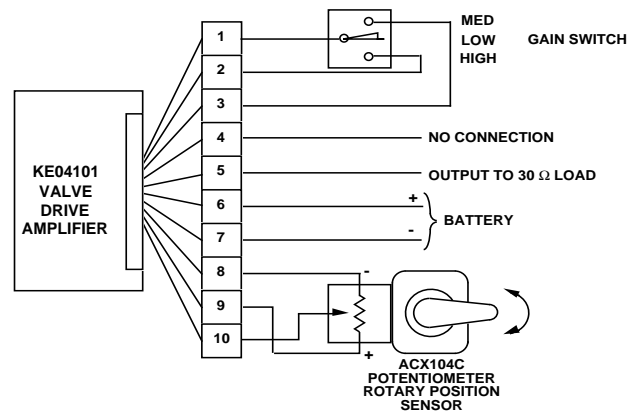
The device is a free-standing amplifier mounted on 4 standoffs. Voltage from a sensor potentiometer, through the amplifier, produces current to drive electrohydraulic actuators. Connections to the amplifier are via screw terminals. An external switch can change gain settings by shorting between two terminals.

DIMENSIONS



Dimensions of the KE04101 in Millimeters (Inches).

CONNECTION DIAGRAM



POLARITY OF BATTERY CONNECTIONS MAY BE REVERSED TO CHANGE ACTION OUTPUT VERSUS SENSOR INPUT

GAIN SWITCH IS OPTIONAL. JUMPERS MAY BE USED IN PLACE OF SWITCH

OUTPUT CHARACTERISTICS

SUPPLY VOLTAGE

12 Vdc (11 to 15 Volts)

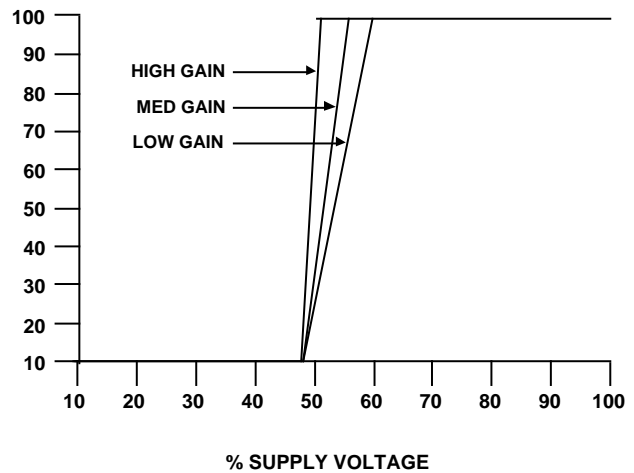
TURN ON VOLTAGE

48% of supply

MAXIMUM OUTPUT CURRENT

100 mA nominal

**% MAXIMUM
OUTPUT VOLTAGE**



1649A