

# Unit Specification

**KE04104**

**Valve Drive Amplifier**

3500 Annapolis Lane North, Minneapolis, MN 55447  
 Telephone: (763) 509-2084 Telefax: (763) 559-0108

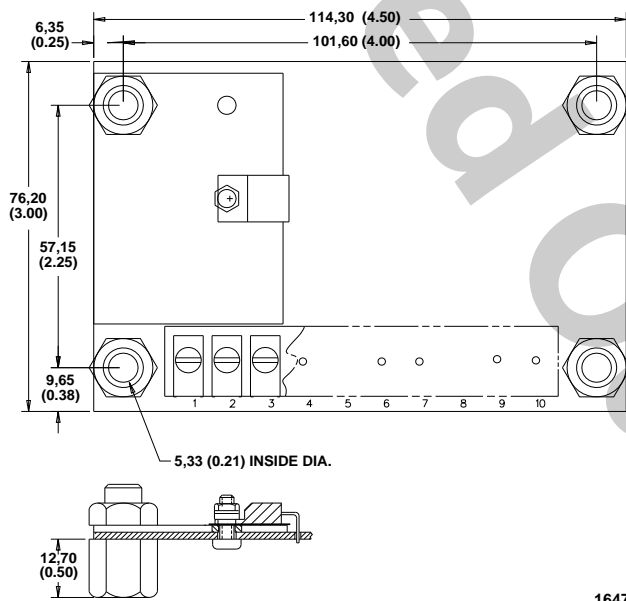
**ISSUE:** 3

**DATE:** September 1996

## GENERAL DESCRIPTION

The device is a free-standing amplifier mounted on 4 standoffs. Voltage from a sensor potentiometer, through the amplifier, produces current to drive electrohydraulic actuators. Connections to the amplifier are via screw terminals with 3/16-inch quick-connects. An external switch can change gain settings by shorting between two terminals.

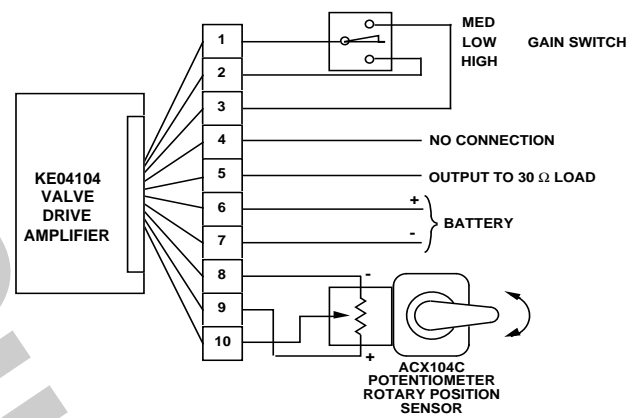
## DIMENSIONS



Dimensions of the KE04104 in Millimeters (Inches).

1647

## CONNECTION DIAGRAM



POLARITY OF BATTERY CONNECTIONS MAY BE REVERSED TO CHANGE ACTION OUTPUT VERSUS SENSOR INPUT

GAIN SWITCH IS OPTIONAL. JUMPERS MAY BE USED IN PLACE OF SWITCH

1648

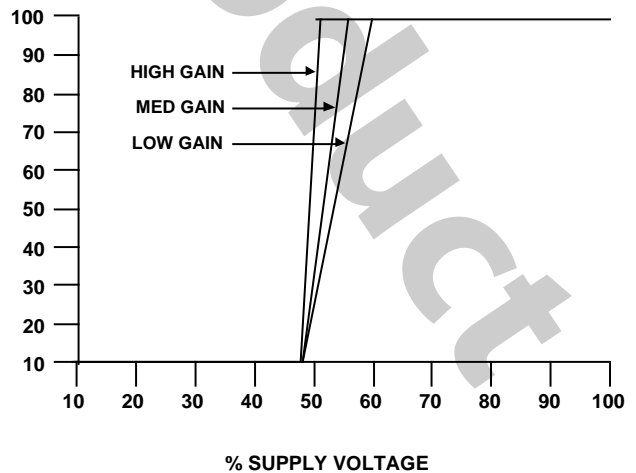
## OUTPUT CHARACTERISTICS

**SUPPLY VOLTAGE**  
12 Vdc (11 to 15 Volts)

**TURN ON VOLTAGE**  
48% of supply

**MAXIMUM OUTPUT CURRENT**  
100 mA nominal

**% MAXIMUM  
OUTPUT VOLTAGE**



1649A